



IP Cameras

MEGApix® IVA+™ models	MEGApix® IVA™ models
DWC-MPB48WiAT	DWC-MB48WiAT



#### Default login information: admin | admin

When logging into the camera for the first time, you will be prompted to set up a new password. You can set the new password using the DW® IP Finder™ software or directly from the camera's browser menu.

#### WHAT'S IN THE BOX

Star Wrench (T-10)		1	Star Wrench (T-20)		1
Test Monitor Cable		1	Moisture Absorber and Installation Guide (Recommended)		1
Screws and Plastic Anchors - 4pcs		1 set	Waterproof Cap and Rubber Rings (Black: ø0.15" (ø4mm), White: ø0.19" (ø5mm))		1
PoE injector and power cable (optional)		1 set	Quick Setup and Download Guides		1 set
Mounting template		1 set			

**NOTE:** Download all your support materials and tools in one place

- Go to: <http://www.digital-watchdog.com/resources>
- Search your product by entering the part number in the **'Search by Product'** search bar. Results for applicable part numbers will populate automatically based on the part number you enter.
- Click **'Search'**. All supported materials, including manuals and quick start guide (QSGs) will appear in the results.



**Attention:** This document is intended to serve as a quick reference for initial set-up. It is recommended that the user read the entire instruction manual for complete and proper installation and usage.

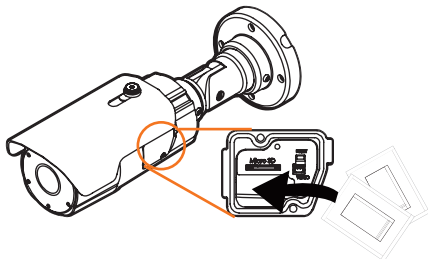
Tel: +1 (866) 446-3595 / (813) 888-9555

digital-watchdog.com

Technical Support Hours:  
9:00 AM – 8:00 PM EST, Monday through Friday

## STEP 1 - PREPARING TO MOUNT THE CAMERA

- The mounting surface must withstand five times the camera weight.
- Do not let the cables get caught in improper places or the electric line cover can be damaged. This may cause a short or fire.
- For the installation process, remove the sun-shield cover as needed.
- Install the moisture packet in the camera's external control panel.
  - Remove the Desi-Pack moisture absorber from the packaging.
  - Open the side cover to reach the external camera control panel.
  - Place the moisture absorber under the camera's SD card slot.



**NOTE:** The camera will generate enough heat to dry moisture during operation. In most cases it will not need the moisture absorber for more than the first day. In cases where the camera can experience a moisture issue, users must keep the moisture absorber in the camera. The moisture absorber has an approximately 6-month life cycle, varying depending on the environment.

**WARNING:** It is highly recommended that you install the moisture absorber when mounting the camera. The moisture absorber prevents moisture from being captured inside the camera's housing, which may cause image performance issues and damage the camera.

- Using the mounting template sheet or the camera itself, mark and drill the necessary holes in the wall or ceiling.

## STEP 2 - CABLING THE CAMERA

Pass the wires through the mount bracket and make all necessary connections.

- If you are using a PoE switch, connect the camera using an Ethernet cable for both data and power.
- If you are using a non-PoE switch, connect the camera to the switch using an Ethernet cable for data transmission and use a power adapter to power the camera.

Power requirements	Power requirements	Power consumption
DWC-MB48WiATW DWC-MPB48WiATW	DC12V, IEEE 802.3at PoE+ class 4 (Adapter not included)	DC12V: 10.2W PoE: 16W

**NOTE:** A PoE injector is required for proper camera power and function. The injector is sold separately.

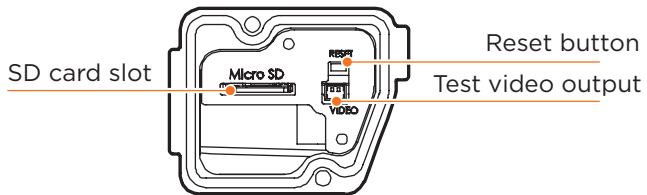
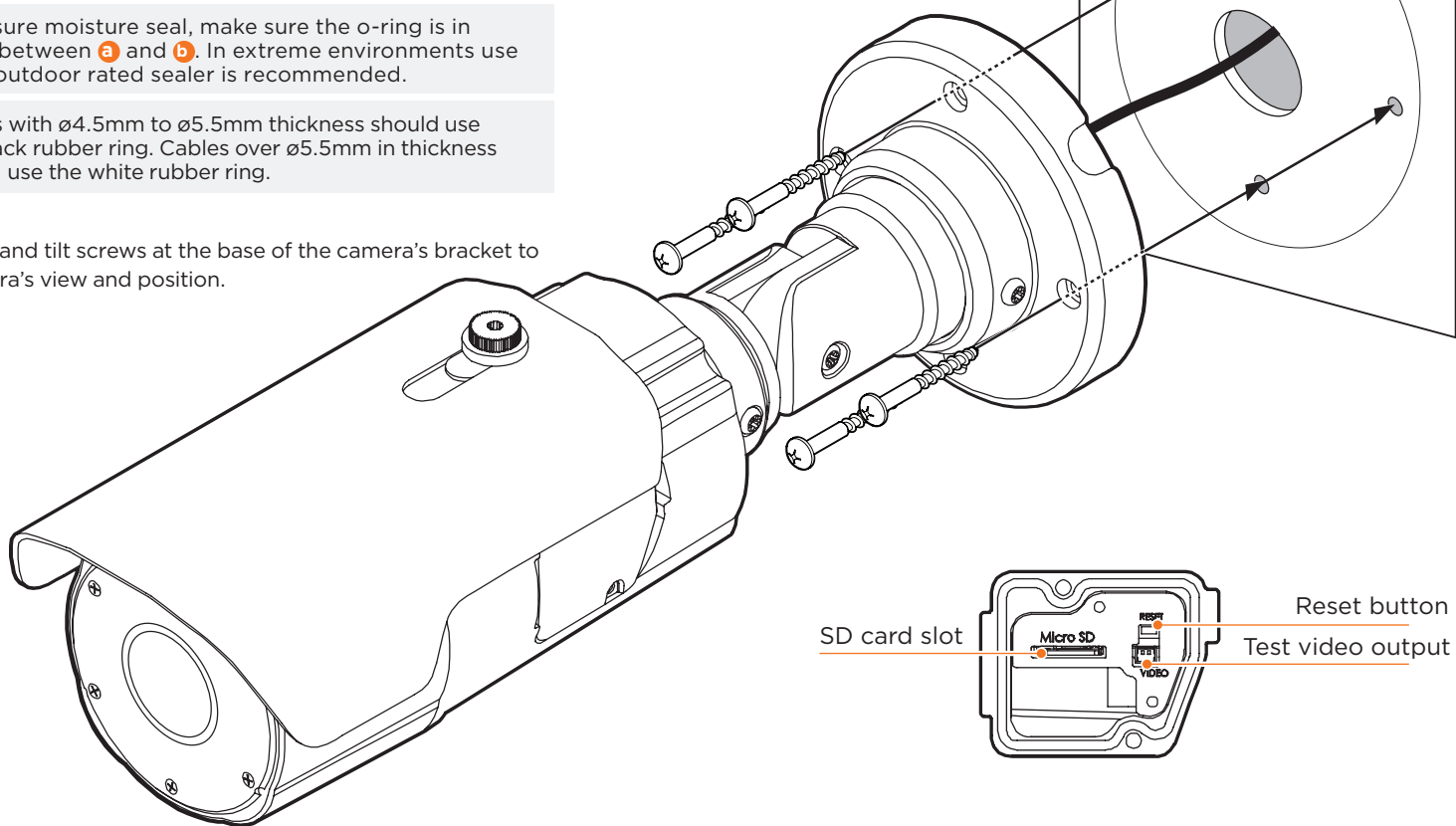
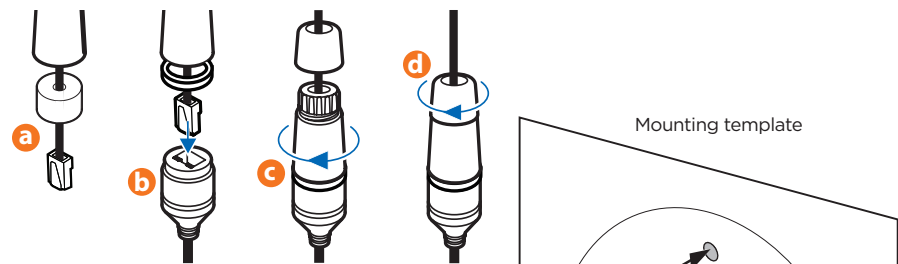
## STEP 3 - INSTALLING THE CAMERA

- Once all cables are connected, secure the camera to the mounting surface using the included screws.
- The waterproof cap set comes with two rubber rings with different diameters. The black rubber ring has an internal diameter of ø0.15" (ø4mm). The white rubber ring has an internal diameter of ø0.19" (ø5mm). When using the waterproof cap, use the rubber ring best suited for your network cable's diameter.
  - Pass the LAN cable through the waterproof cap, gasket and the **a** rubber ring.
  - Connect the LAN cable to the camera's network port **b**.
  - c** will be affixed to **b** with a ¼ turn counter-clockwise.
  - Thread and twist **d** tightly to **c**.

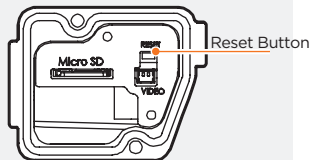
**NOTE:** To ensure moisture seal, make sure the o-ring is in place between **a** and **b**. In extreme environments use of an outdoor rated sealer is recommended.

**NOTE:** Cables with ø4.5mm to ø5.5mm thickness should use the black rubber ring. Cables over ø5.5mm in thickness should use the white rubber ring.

- Loosen the pan and tilt screws at the base of the camera's bracket to adjust the camera's view and position.

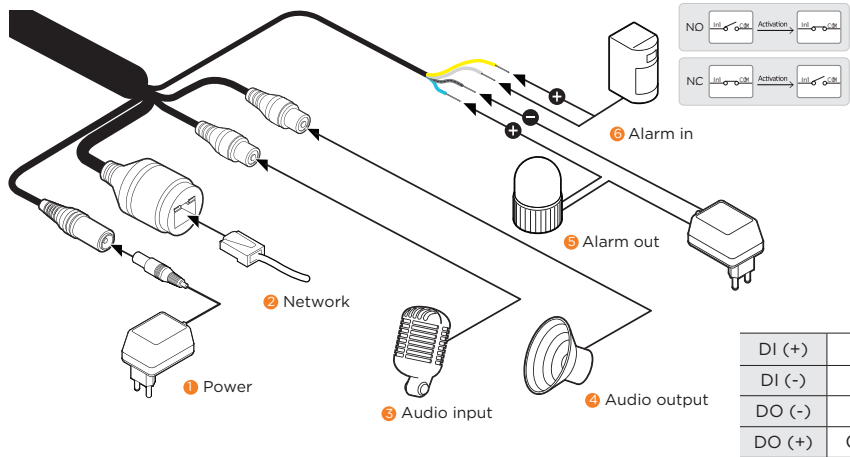


**Resetting the camera:** To reset the camera, press the reset button on the external control panel for five (5) second. The system will initiate a camera-wide reset of all the settings, including network settings.



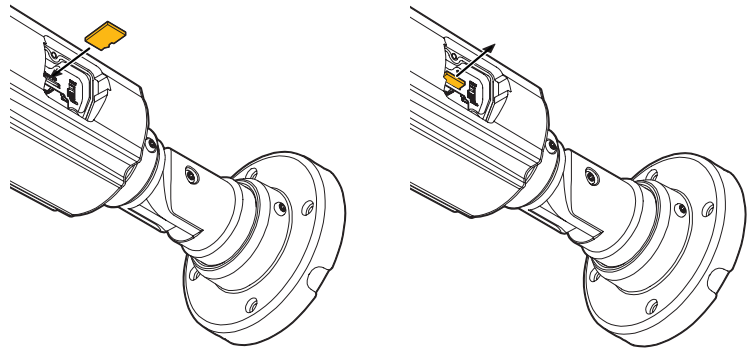
## STEP 4 – CABLING

Use the diagram below to properly connect power, network, audio, alarm and sensors to the camera.



## STEP 5 – MANAGING THE SD CARD

- To install the camera's SD Card, locate the SD card slot in the external control panel on the side of the camera. Use the included wrenches to open the side door to access the SD card slot.
- Insert class 10 SD/SDHC/SDXC card into the SD card slot by pressing the SD card until clicks.
- To remove the SD card, press the card inward until it clicks to release from the card slot then pull out from the slot.



**NOTE:** Maximum SD Card size supported: 64GB. When inserting the SD card into the card slot, the SD card's contacts should be facing upward, as shown in the diagram.

## STEP 6 – DW® IP FINDER™

Use the DW IP Finder software to scan the network and detect all MEGApix® cameras, set the camera's network settings or access the camera's web client.

The screenshot shows the DW IP Finder software interface. Annotations point to various features:

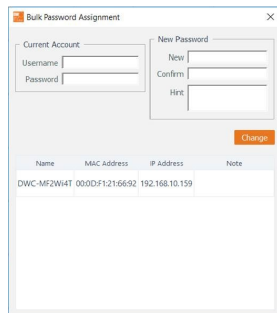
- Thumbnail view
- Select network to scan
- Filter results
- Scan network
- Show/hide thumbnail view
- Refresh thumbnail view
- Bulk IP assignment
- Bulk password assignment
- Firmware upgrade
- Selected camera's username and password
- Firmware version
- Camera's uptime
- Open IP configuration settings
- Ping camera
- Camera's network information
- Camera's name, IP and MAC addresses

### Network Setup

- To install the DW IP Finder, go to: <http://www.digital-watchdog.com>
- Enter "DW IP Finder" on the search box at the top of the page.
- Go to the "Software" tab on the DW IP Finder page to download the installation file.
- Follow the installation to install the DW IP Finder. Open the DW IP Finder and click 'Scan Devices'. It will scan the selected network for all supported devices and list the results in the table. During the scan, the DW® logo will turn gray.
- When connecting to the camera for the first time, a password must be set. To set up a password for your camera:
  - Check the box next to the camera in the IP Finder's search results. You can select multiple cameras.
  - Click "Bulk Password Assign" on the left.
  - Enter admin/admin for the current username and password. Enter a new username and password to the right.

Passwords must have a minimum of 8 characters with at least 4 combinations of uppercase letters, lowercase letters, numbers and special characters. Passwords cannot contain the user ID.

  - Click "change" to apply all changes.
- Select a camera from the list by double-clicking on

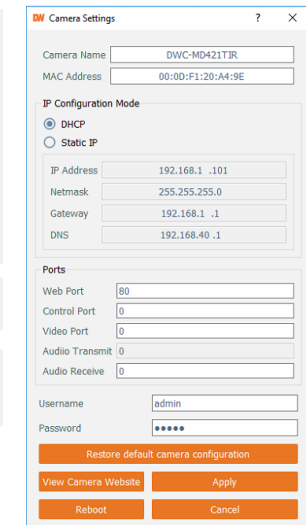


- the camera's image or clicking on the 'Click' button under the IP Conf. column. The pop-up window will show the camera's current network settings, allowing admin users to adjust the settings as needed.
- To access the camera's web page, click on the 'View Camera Website' from the IP Config window.
- To save changes made to the camera's setting, enter the username and password of the camera's admin account and click 'Apply'.

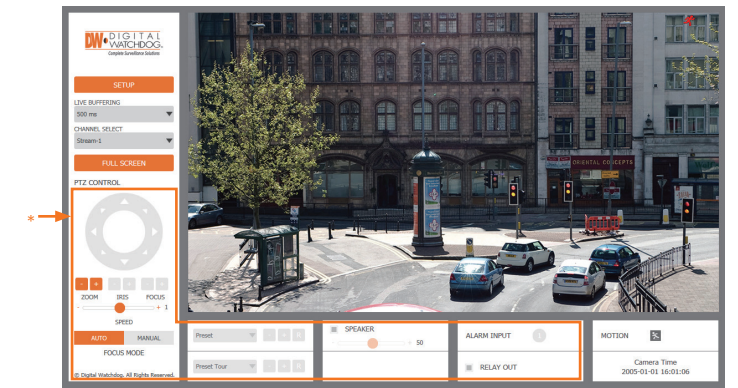
- Select DHCP to allow the camera to receive its IP address automatically from the DHCP server.
- Select "Static" to manually enter the camera's IP address, (Sub)Netmask, Gateway and DNS information.
- The camera's IP must be set to static if connecting to Spectrum® IPVMS. Contact your network administrator for more information.

Default TCP/IP information: DHCP.

Port forwarding must be set in your network's router to access the camera from an external network.



## STEP 6 – WEB VIEWER

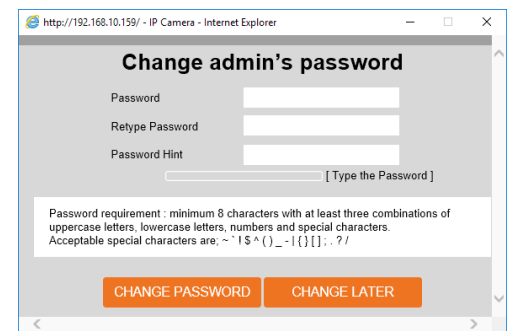


The GUI display may differ by camera models.

Once the camera's network settings have been setup properly, you can access the camera's web viewer using the DW® IP Finder™.

To open the camera's web viewer:

- Find the camera using the DW® IP Finder™.
- Double-click on the camera's view in the results table.
- Press the 'View Camera Website'. The camera's web viewer will open up in your default web browser.
- Enter the camera's username and password you setup in the DW® IP Finder™. If you did not setup a new username and password via the DW® IP Finder™, you will not be able to view the video from the camera. A message will direct you to setup a new password for the camera to view the video.



- When accessing the camera for the first time, install the VLC player for web files to view video from the camera.

**NOTE:** Some menu options may not be available based on the camera model. See the full manual for more information.

**NOTE:** Please see the full product manual for web viewer setup, functions and camera settings options.